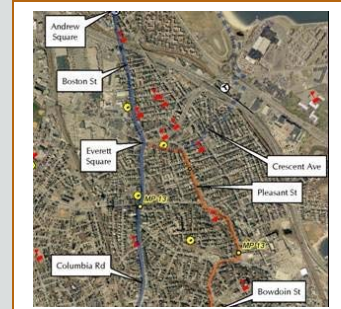


**PROJECT:** NSTAR Electric 345 kV Transmission Reliability Project**CLIENT:** NSTAR Electric

Epsilon performed route selection studies, licensing and permitting for NSTAR's proposed 345 kV Transmission Reliability Project. The \$210,000,000 project includes 18 miles of multicircuit underground 345 kV line, a new switching station and expansions of two existing substations. The project will allow power to flow from the existing grid south of Boston directly to in-city substations. Working with NSTAR and the Shaw Group, Epsilon is responsible for the MEPA EENF and subsequent SEIR as well as the Petition to the Massachusetts Energy Facilities Siting Board (EFSB). Permits will include filings with the Army Corps, MA DEP and local Conservation Commissions. The project went into operation in the summer of 2006 (Phase 1).

**PROJECT:** Mill River Pipeline, Fall River, Freetown, Somerset, and Swansea, MA**CLIENT:** Mill River Pipeline LLC

Epsilon was responsible for environmental permitting for two 24" high-pressure pipelines (2.5 and 3.5 miles) to connect the Weaver's Cove LNG Terminal in Fall River, MA to the existing Algonquin Gas transmission system in southeastern MA. Epsilon developed route alternatives and analyzed environmental components of the project including wetlands, water quality, vegetation, wildlife, geology, soils, land use and cultural resources. Epsilon completed the FERC Resource Reports for the pipelines as well as the US Army Corps of Engineers, DEP Water Quality Certification, Chapter 91, and Conservation Commission submittals.

**PROJECT:** 17 Mile Water Supply Pipeline, Dighton, Taunton, Raynham, and Easton, MA**CLIENT:** Bluestone Energy Services

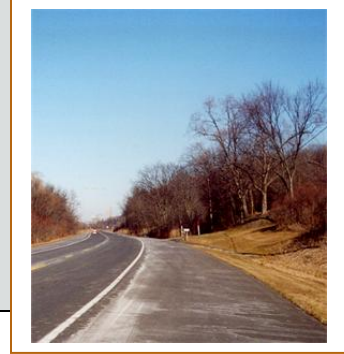
Epsilon completed field studies, wetland delineations, MEPA, DEIR and FEIR and Conservation Commission filings for a 17 mile water supply pipeline connecting the Bluestone reverse osmosis desalination project with the City of Brockton and other municipal water supply systems. The pipeline route follows an MBTA-owned abandoned railroad right-of-way for much of its length. Routing challenges included a crossing of the Hockmock Swamp, an Area of Critical Environmental Concern (ACEC), and potential crossings of the Taunton River.



**PROJECT:** Empire State Newsprint Projects - Gas Transmission Line, Rensselaer, Schodack and East Greenbush, NY

**CLIENT:** Besicorp-Empire Development Company, LLC

Epsilon prepared the New York State Public Service Commission Article VII Application and the US Army Corps of Engineers Section 404 Water Quality Permit Application for the 4.5 mile 16- inch diameter high pressure natural gas pipeline located along Route 9J in the City of Rensselaer and the Towns of Schodack and East Greenbush, New York. Several alternative routes were evaluated; the preferred route was selected based on estimated costs and environmental considerations, including wetlands, surface waters, geology, soils, historical and archaeological resources, vegetation and wildlife. Epsilon was also responsible for demonstrating project consistency with the Coastal Zone Management Act as administered by the NY Department of State.



**PROJECT:** Key Span Energy, Sagamore Replacement Project, Cape Cod, MA

**CLIENT:** Key Span Energy Delivery



Epsilon provided permitting assistance to KeySpan for the construction of approximately 13.1 miles of new high-pressure, distribution pipeline on Cape Cod, Massachusetts. Epsilon provided environmental analysis and expertise in the preparation of filings for the three major Massachusetts environmental review processes: the Energy Facility Siting Board (EFSB), Massachusetts Environmental Protection Act (MEPA) and the Cape Cod Commission (CCC). As part of the EFSB review process, Epsilon provided expert testimony on the environmental aspects of the project.

**PROJECT:** Cape Cod Pipeline Reinforcement, Bourne, Sandwich, and Falmouth, MA

**CLIENT:** KeySpan Energy Delivery

Epsilon completed a route selection study, environmental analysis, an Energy Facilities Siting Board (EFSB) Petition, and the Massachusetts Environmental Policy Act Environmental Notification Form for a 7.6 mile, 200 psi pipeline upgrade in the Towns of Bourne, Sandwich and Falmouth, MA. The preferred route makes use of existing rights of way and roadway layouts to cross the Massachusetts Military Reservation (MMR). An alternative route along Routes 28A and 151 was developed and analyzed as well. The pipeline was approved in 8 months; construction was completed in 2005.



**PROJECT:** Nantucket Cable Project

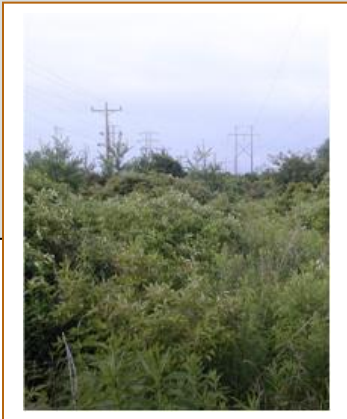
**CLIENT:** Nantucket Electric Company, a National Grid Company

Epsilon personnel prepared a routing assessment for a major offshore electric cable project including an alternatives assessment to determine the best on-shore interconnection point to the existing electric grid and alternative routing for the approximately 30 mile undersea segment. Permit applications include an Expanded Environmental Notification Form under the Massachusetts Environmental Policy Act, U.S. Army Corps of Engineers Section 404/10 permit, 401 Water Quality Certification, Endangered Species assessment and local wetlands permitting. The project has been constructed and went into operation in April, 2006.



**PROJECT:** Besicorp-Empire Development Company/Niagara Mohawk Power Corporation

**CLIENT:** Besicorp-Empire Development Company

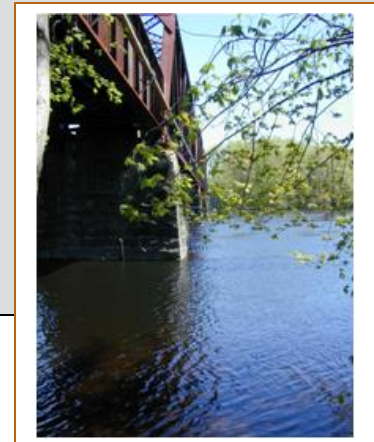


Epsilon performed route selection and environmental analysis for the construction of a 8.1-mile, 345 kV electric transmission interconnection to serve the Besicorp-Empire Development Company's proposed 505 MW combined-cycle cogeneration facility. Analyses included alternative route and substation locations, wetlands delineation, visual studies and EMF calculations. Epsilon prepared the New York State Article VII application and the United States Army Corps of Engineers permit application.

**PROJECT:** Saco River Crossing, Saco, ME

**CLIENT:** Granite State Gas Company

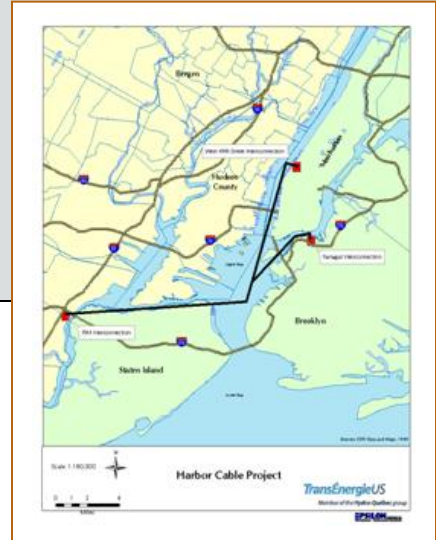
Epsilon successfully permitted the relocation of an existing 8" gas pipeline from a railroad bridge across the Saco River to a horizontal directional drill alignment beneath the bed of the river. The project required wetlands delineation and approvals from the Saco River Corridor Commission, Maine Department of Environmental Management and US Army Corps of Engineers. The pipe relocation has been completed.



**PROJECT:** Harbor Cable Project, New York to New Jersey

**CLIENT:** TransÉnergie U.S. Ltd.

Epsilon personnel prepared a route selection study and environmental analysis for a proposed 650 MW HVDC merchant transmission interconnection between the PJM grid and New York City. The siting study evaluated underground and submarine routes based on environmental, land ownership and constructability considerations. Subsequent project phases will include the preparation of state and local permit documents including an Article VII filing with the New York Public Service Commission.



**PROJECT:** Empire State Newsprint Projects - Gray Water Pipeline, Rensselaer and Albany, NY

**CLIENT:** Besicorp-Empire Development Company, LLC



Epsilon prepared the US Army Corps of Engineers Section 10/Section 404 Permit Application for a 3,400-foot, 28-inch diameter gray water pipeline beneath the bed of the Hudson River a 17 MGD water intake and a treated wastewater diffuser in the river. The gray water line will supply treated wastewater from the Albany County Sewer District treatment plant for use as cooling tower make-up water, and will be installed a minimum of 30 feet below the bed of the river utilizing direction drilling techniques.