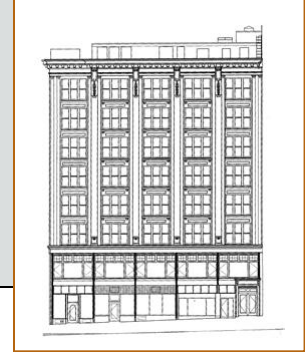


PROJECT: 44 Bromfield Street, Boston, MA

CLIENT: CEA Group, Inc.

Epsilon prepared a successful federal tax credit application for the 1916 Publicity Building, a brick commercial block, rehabilitated for continued retail office uses. Epsilon also prepared nomination forms for the building's individual listing on the National Register.



PROJECT: Affordable Housing Projects, Boston, MA

CLIENT: Haley House/Madison Park Development



Epsilon prepared federal tax credit certification applications for four historic buildings in Boston's South End Historic District which were converted into 74 units of affordable housing. Epsilon coordinated consultation with the National Park Service, the Massachusetts Historical Commission, and the South End Landmarks District Commission.

PROJECT: Dow Block, Stoneham, MA

CLIENT: The Copley Group

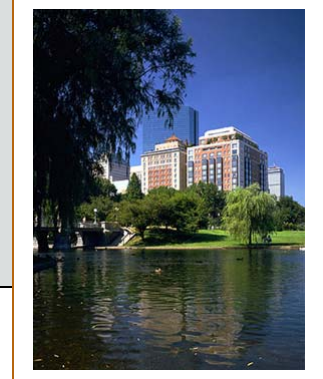
Epsilon prepared a Historic Preservation Certification Application for the rehabilitation of the 1864 Dow Block, a prominent brick commercial block in Stoneham's Central Square. Epsilon developed a work plan conforming to the Secretary of the Interior's Standards for Rehabilitation and coordinated agency review with the Massachusetts Historical Commission and the National Park Service.



PROJECT: Ritz-Carlton Hotel, Boston, MA

CLIENT: Millennium Partners-Boston

Epsilon prepared the federal certification application for the rehabilitation of the 1927 landmark Ritz-Carlton Hotel located within Boston’s Back Bay Historic District. Epsilon coordinated reviews with the Boston Landmarks Commission, the Massachusetts Historical Commission, and the National Park Service. The completed project received a 2003 Preservation Award from the Massachusetts Historical Commission.



PROJECT: The Arsenal on the Charles, Watertown, MA

CLIENT: O’Neill Properties Group



Epsilon served as the preservation consultant for the rehabilitation and adaptive reuse of the National Register-listed Watertown Arsenal complex for first-class office and research and development space. The multi-building, 600,000 square foot project required extensive review and coordination with the National Park Service and the Massachusetts Historical Commission.

PROJECT: Union Station Rehabilitation Project, Worcester, MA

CLIENT: Worcester Redevelopment Authority

Epsilon provided preservation consulting services for the rehabilitation of the monumental 1911 Classical Revival/Beaux Arts style train station as a regional transportation/retail center. Once ruinous and scheduled for demolition, the National Register-listed property has been rehabilitated utilizing the Federal Historic Rehabilitation Tax Credit and Federal Transportation Enhancement funds. Epsilon assisted the Worcester Redevelopment Authority to structure the tax credits, to meet federal rehabilitation standards, coordinated all submittals to the Massachusetts Historical Commission and National Park Service, and prepared necessary NEPA documentation.

