

PROJECT: Lovejoy Wharf; Boston, MA

CLIENT: Ajax Investment Partners, LLC

Epsilon performed a GIS-based analysis to determine the historic mean low water line for this 250-unit residential/mixed-use project on the Boston waterfront. Epsilon researched and compiled dozens of historic plans from a variety of sources to determine the extent of Chapter 91 jurisdiction. GIS layers were developed using geo-referencing techniques and residual error analysis.



PROJECT: Mt. Auburn Hospital; Cambridge, MA

CLIENT: Mt. Auburn Hospital

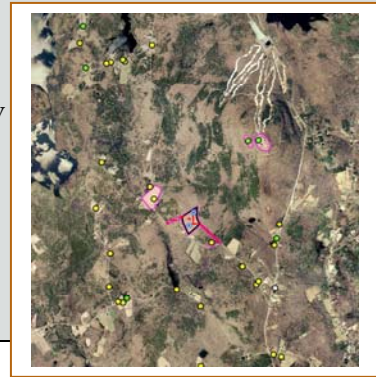


Epsilon performed a GIS-based analysis to determine the historic mean low water line for Chapter 91 jurisdiction determination for this hospital expansion project. Epsilon compiled a number of 19th century historic plans of the Charles River and integrated them into GIS.

PROJECT: Princeton Wind Project; Princeton, MA

CLIENT: Princeton Municipal Light Department

Epsilon's historic planning team conducted research on historic resources in the vicinity of the proposed project, two wind turbines located south of Mount Wachusett. National register listed, inventoried, and surveyed properties were entered into a GIS database, based on field and historic document research. Epsilon also mapped the proposed Area of Potential Effect (APE) for the wind turbine project.



PROJECT: Sconset Beach Nourishment, Nantucket, MA

CLIENT: Sconset Beach Preservation Fund



Epsilon is providing permitting services for a large-scale (2.7 million cubic yard) beach and dune nourishment project designed to protect up to four miles of eroding coastline along the eastern shore of Nantucket Island. Among other GIS analyses, Epsilon analyzed the rate of shoreline retreat by using current survey data, historic aerial photography, and an existing shoreline change dataset created by CZM.