

PROJECT: Airport Terminal, Access and Parking Study, Barnstable, MA

CLIENT: Barnstable Municipal Airport Commission

Epsilon analyzed potential sites for a new terminal, with associated parking and traffic access, at the Barnstable Municipal Airport. Important environmental and infrastructure constraints included water supply issues, sensitive nearby wetlands and rare species habitat, and extreme traffic congestion on surrounding highways during the peak tourist months. Epsilon prepared an Environmental Assessment for the project under NEPA.



PROJECT: Charles/MGH MBTA Station, Boston, MA

CLIENT: Massachusetts Bay Transportation Authority



Epsilon prepared state and federal environmental documents for the MBTA's Charles/MGH Red Line Station improvements, including an Environmental Assessment under NEPA and an Environmental Notification Form under MEPA. Epsilon also assisted the MBTA and Federal Transit Administration in their compliance with Section 106 and Section 4(f). The project is located within the Charles River Basin Historic District and adjacent to the Beacon Hill Historic District and was subject to review by the Massachusetts Historical Commission and the Boston Landmarks Commission.

PROJECT: Everett Parkland, Everett, MA

CLIENT: City of Everett

Epsilon prepared an Environmental Assessment under NEPA for the National Park Service to address the environmental consequences of the City of Everett's proposal for a new high school in a portion of a local park. Approval from the NPS is required since Section 6(f) Land and Water Conservation Funds were used to improve park facilities in the 1970s. The EA demonstrates that replacement parks adequately replace the appraised value and recreational usefulness of the parkland converted by the new high school.



PROJECT: Gold Line Phase II, CA

CLIENT: Cambridge Systematics

Epsilon reviewed selected sections of the US Department of Transportation Federal Transit Administration *Gold Line Phase II Pasadena to Montclair Draft Environmental Impact Statement/Draft Environmental Impact Report, Volume 1A*. The focus of this review was on compliance with applicable federal environmental laws and regulations. Epsilon's review focused primarily on the Environmental Evaluation, Agency Coordination and Section 4(f) evaluation.



PROJECT: Massachusetts Correctional Institution Concord Expansion, Concord, MA

CLIENT: Division of Capital Asset Management

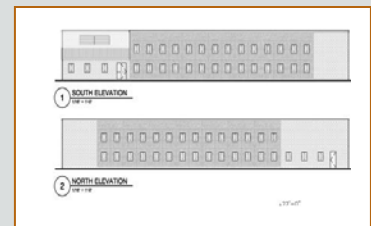


Epsilon prepared the Environmental Assessment for proposed expansion of the Massachusetts Correctional Institute in Concord. Epsilon developed baseline data on environmental issues to determine the project's potential environmental impact. The project was issued a Finding of No Significant Impact (FONSI) from the Department of Justice based on the EA.

PROJECT: Massachusetts Correctional Institution Norfolk Block 5 Housing, Norfolk, MA

CLIENT: Division of Capital Asset Management

Epsilon is preparing an Environmental Assessment for the expansion of the Massachusetts Correctional Facility at Norfolk, a medium security prison constructed under a master plan developed in 1930. The current project, a 64-bed addition to the 1,400-inmate facility, is consistent with the original master plan. Key environmental issues involve ensuring adequate water supply and wastewater treatment capacity.



PROJECT: Nantucket Memorial Airport, Nantucket, MA

CLIENT: Nantucket Airport Commission

Epsilon analyzed terminal expansion alternatives, runway safety area enhancements, construction of new taxiways, and other proposed airside and landside improvements to the Nantucket Memorial Airport, one of the busiest airports in Massachusetts. Key environmental challenges included protecting a number of rare species, including plants, moths, and birds, and maintaining groundwater quality to safeguard the island's drinking water supply. Epsilon prepared an Environmental Assessment for the project under the NEPA.



PROJECT: Old Post Office, Washington, DC

CLIENT: AEW Capital Management



As consultants to AEW Capital Management and the US General Services Administration, Epsilon prepared the *Strategy for Compliance with the National Environmental Policy Act* in anticipation of a major redevelopment of this historic landmark structure in downtown DC. The redevelopment would include the 416,000-square-foot Old Post Office building, which is currently used for federal offices, and an adjacent, vacant 113,000-square-foot annex.

PROJECT: Turners Falls Airport, Turners Falls, MA

CLIENT: Turners Falls Airport Commission

Epsilon conducted a natural resources inventory to support the airport master planning and NEPA and MEPA documentation. The airport is located adjacent to the Connecticut River; grasslands adjacent to the runway support a state-listed rare bird species. The Airport Commission was proposing to lengthen the existing runway; an alternative was considered to shift the runway laterally to avoid conflicts in the approach airspace.



PROJECT: Union Station, Worcester, MA

CLIENT: Worcester Redevelopment Authority

To support a new bus terminal at Worcester's historic Union Station, Epsilon prepared technical information for the Categorical Exclusion filed by the Worcester Regional Transit Authority under NEPA. In addition, Epsilon prepared the National Park Service Rehabilitation Investment Tax Credit Application and amendments for the station rehabilitation and Section 106 documentation for State Historic Preservation Office review.



PROJECT: Wampanoag Family Entertainment Complex, Fall River, MA

CLIENT: The Wampanoag Tribe



Epsilon managed the preparation of environmental documents for a new casino complex in Massachusetts proposed by the Wampanoag Tribe of Gay Head. Environmental filings were required pursuant to federal NEPA and state of Massachusetts MEPA requirements. Key issues included traffic, hazardous materials, wetlands, cultural resources, and socioeconomics.

PROJECT: Weavers Cove Energy LNG Terminal, Fall River, MA

CLIENT: Weavers Cove Energy LLC/Mill River Pipeline LLC

Epsilon is responsible for regulatory interface, environmental studies, analysis, licensing, and permitting for a proposed liquefied natural gas (LNG) import terminal on the Taunton River in Fall River, MA, and associated pipeline interconnections. The project also involves the dredging of the Mount Hope Bay-Fall River Harbor Federal navigation channel and turning basin. Epsilon prepared full resource reports to support the Federal Energy Regulatory Commission's (FERC) NEPA Environmental Impact Statement. The project was certificated by FERC in 2005 and Epsilon is continuing its effort to support federal and state permitting requirements.

