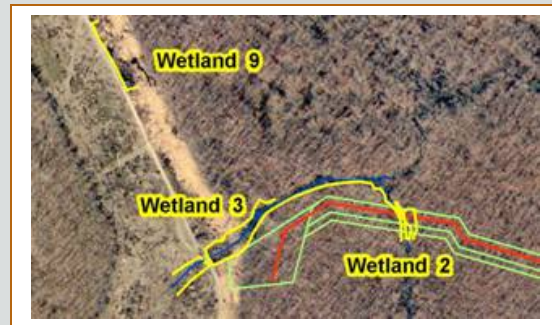


**PROJECT:** Mill River Pipeline

**CLIENT:** Mill River Pipeline, LLC

This project consists of the construction of two 24-inch diameter pipeline laterals and associated facilities that will connect the Weaver’s Cove LNG Terminal in Fall River, MA to the existing pipeline facilities of Algonquin Gas Transmission Company. The proposed approximately 2.5 mile Western Lateral will be located in Fall River, Somerset, and Swansea, Massachusetts. It will cross under the Taunton River and then traverse in a westerly direction principally within an existing electric transmission corridor. The proposed approximately 3.6 mile Northern Lateral will follow an existing pipeline right-of-way from Fall River into the Town of Freetown.

Wetlands along the pipeline lateral routes were field delineated by Epsilon between October 2003 and March 2004 in accordance with the methodologies described in the US Army Corps of Engineers *Wetlands Delineation Manual* (January 1987) and the Department of Environmental Protection’s (DEP) *Handbook on Delineating Bordering Vegetated Wetlands* (March 1995). Wetland resource areas delineated by Epsilon included bordering and isolated vegetated wetlands, riverfront area, coastal bank, inland bank, salt marsh, coastal beach and coastal dune.



**PROJECT:** Lucent Technologies Master Plan Redevelopment Project, North Andover, MA

**CLIENT:** Huntress Associates



Epsilon delineated wetland resource areas on the 160 acre Lucent Technologies property in North Andover, MA. The delineation was completed in accordance with the MA Department of Environmental Protection handbook *Delineating Bordering Vegetated Wetlands Under the Massachusetts Wetlands Protection Act* (MADEP, 1995), the U.S. Army Corps of Engineers *Wetland Delineation Manual* (USACE, 1987) and the North Andover Wetland Protection Bylaw. Resource areas delineated by Epsilon included bordering vegetated wetlands, riverfront area, inland bank, and isolated vegetated wetlands. The Conservation Commission and its consultant concurred with Epsilon’s